

NEW WILDLIFE-FRIENDLY GARDEN AT GARSTON STATION



We're creating a wildlife-friendly garden on Network Rail land at Garston Station - designed to support biodiversity while providing opportunities for the local community to get involved.

- ✓ **Volunteer Opportunities**
- ✓ **Educational Visits**
- ✓ **Support Local Wildlife**






Contact Us!

For more information and to get involved:

info@abbeylinecommunityrail.org.uk
07929 756056



This new garden aims to:

-  *Support local wildlife by creating a welcoming habitat*
-  *Provide volunteering opportunities for people to connect with nature*
-  *Offer educational visits for groups*
-  *Encourage environmental awareness and pride in the local area*
-  *Help reduce antisocial behaviour by creating a well-maintained, cared-for space*

Access to the Garden

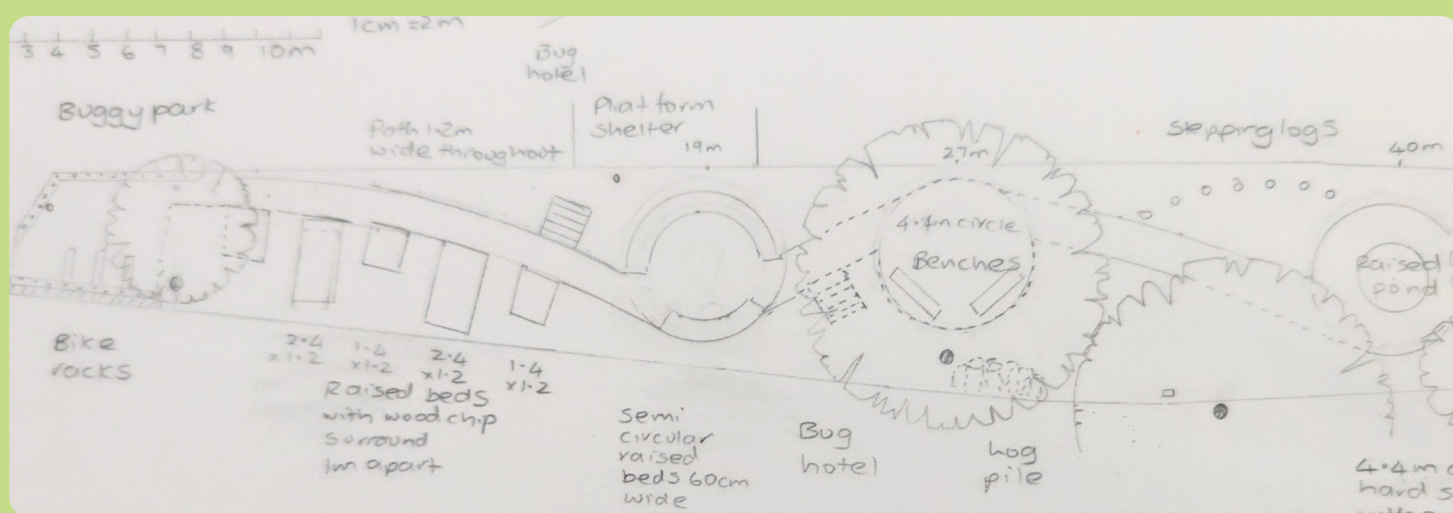
This area is on Network Rail land, so:

Access is for approved groups only, including a local residents group

Gardening sessions will follow Network Rail safety guidelines

The garden will not be open to the general public

There is an opportunity to put on organised open days for all



A rough plan of what the garden will look like

If you have any questions or concerns, please contact us:

info@abbeylinecommunityrail.org.uk
07929 756056

Let's work together to create a greener, more welcoming space for Garston – for people and wildlife alike

