



**CDA Herts**

bringing together people  
and communities



**AGM**  
**27 June 2022**

**Kate Belinis DL**  
**Chief Executive Officer**  
**CDA Herts**

**CDA Herts “Bus” will take you to your destination over a period of time and with “stop-offs” at both regular and request stops.**

**We will travel with you to improve your wellbeing across the diverse themes/topics of interest.**



**CDA Herts**



bringing together people  
and communities

**Who are we?**

**Enablers**

**Wellbeing**

**People doing it  
for themselves**

**How will we do this?**

**Partnerships**

**Communities of Practice**

**Networks**

**Forums**

**Advocacy**

# Overarching themes



**CDA Herts**

bringing together people  
and communities

Community Development	Health and wellbeing	Rural life and Environment	Social Justice	Support services
Capacity building	VCFSE Alliance	Rural Support Networks Village Halls Advisory		Training Better Boards Building Effectiveness
Advocacy support	Covid Recovery BAME Social prescribing  HEPP	Rural Loneliness Forum		Community Help Herts (CHH) county wide services
Building up local networks and Community Hubs	VPAC Recovery  Community gardens	Community led housing	Justice Bus free legal advice: family, housing, employment	Governance and sustainability
Marginalised people Ethnic Minorities Young and older People	Health Equalities and ICS/ICP/PCN  HCC/Public Health BAME Network	Digital inclusion  Community Energy  Oil Buying scheme	Play Area Scheme Prison  Jobs Pathway	Organisational health checks

# *The Power of “ABCD”*

## **“Discoverables” Not Deliverables**

**“The world is full of magic things,  
patiently awaiting for senses to grow  
sharper”**

**W.B. Yeats**

# Asset Based Community Development = ABCD

CDAHerts



bringing together people  
and communities

*Asset Based Community Development is about people living in local places and taking responsibility for each other and their local resources.*

*It is a description, not a model, of how local residents grow collective efficacy (Sampson et al., 1999) and what they use to do so (McKnight, 2009).*

## What are the assets?

- **The gifts, skills, knowledge, and passions of all local residents**
- **The power of local social networks/associations**
- **The resources of public, private and non profit institutions**
- **The physical resources of place**
- **The economic resources of place**
- **The stories of its' residents shared lives**

# Principles and Practices

Principles	Practices
Citizen led	Best placed to do things together
Relationship oriented	Individuals from all sectors working towards consensual groupings
Asset based	What is currently strong and not what is wrong?
Place based	Explore what is available in the neighbourhood
Inclusion focused	How can you know what the community needs until you know what it has?



CDA Herts

bringing together people  
and communities

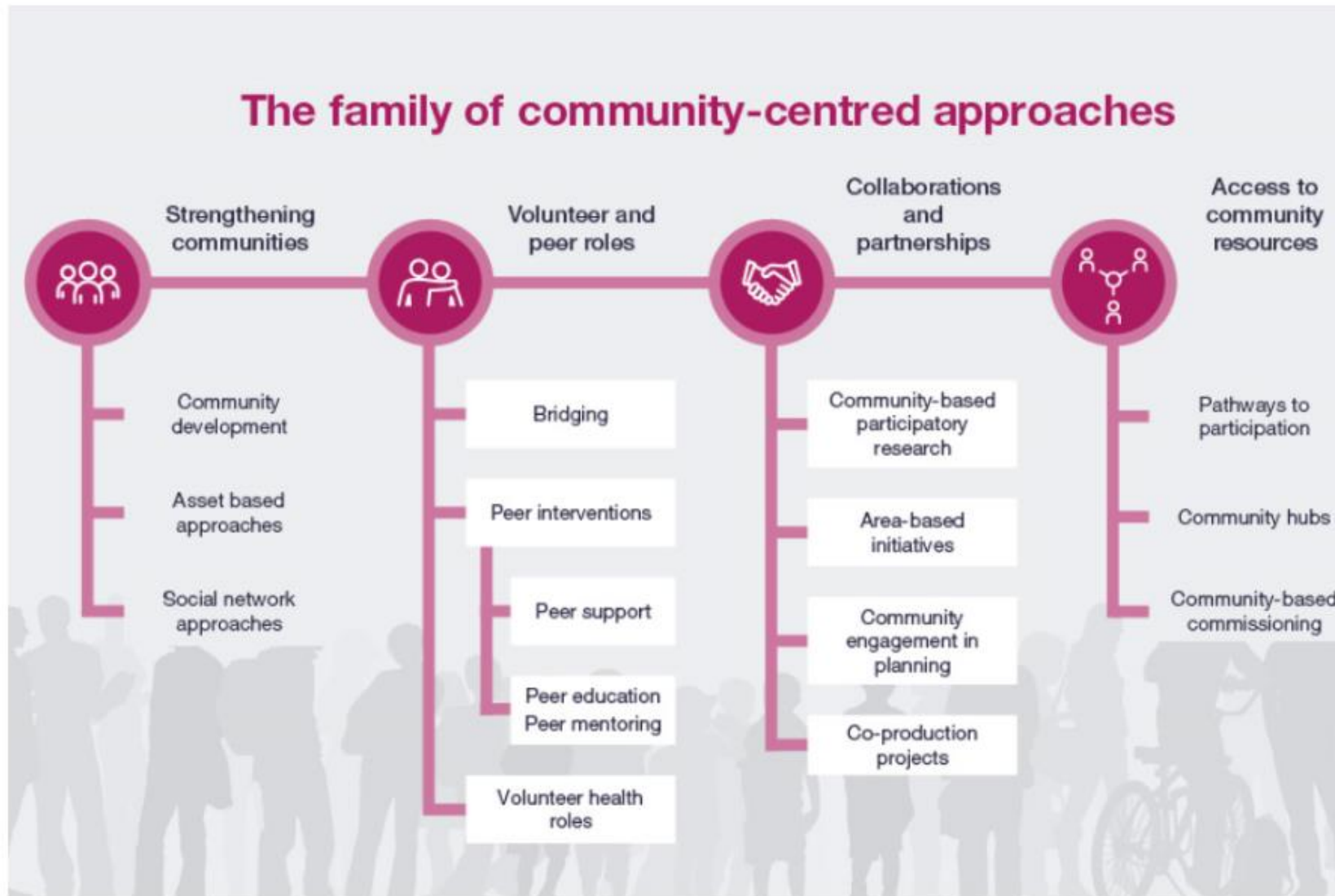


Figure 10. Modes of community-centred action.



# Thank you for listening 😊

