

# Going Local

Here are some favourites as recommended by locals...

## Places to eat

The Florist Watford, Flourish Bakery, LP Café Watford, Waffle House St. Albans, St Albans Museum + Gallery Café, Abbots Kitchen.



## Outdoors

Watford miniature railway, Cassiobury Farm & Fishery, Paddling pools and hub all at Cassiobury Park, Oxhey Activity park, Verulamium park's vast outdoor space for walking, picnics, outdoor activities and toddler splash park (check opening times).

## Places to visit

St Albans Cathedral, Watford FC, Watford Market, Watford Museum and St Albans traditional market on market days.

Or catch a show at the Pump theatre, The Alban Arena, Watford Colosseum or Abbey Theatre.

## Did you know?

St Albans South Signal box was built in 1892, this Midland Railway signal box contains a 44-lever frame dating from 1904 or before. It is the largest such box in preservation, and one of the few boxes open to the public next to a busy operational main line. Located next to St Albans City Station.

# Local Tourist Information...

Enjoy St Albans [www.enjoystalbans.com](http://www.enjoystalbans.com)

Visit Watford [www.visitwatford.com](http://www.visitwatford.com)

Visit Herts [www.visitherts.co.uk](http://www.visitherts.co.uk)

Leisure rail journeys across Britain  
[www.scenicrailbritain.com](http://www.scenicrailbritain.com)

Bus services

[www.plusbus.info](http://www.plusbus.info)  
[www.intalink.org.uk](http://www.intalink.org.uk)



For train tickets and Abbey Line service timetables

London Northwestern Railway  
[www.londonnorthwesternrailway.co.uk](http://www.londonnorthwesternrailway.co.uk)

Also explore further with London Northwestern Railway, travel from Watford Junction to Birmingham, Liverpool and Manchester.

Did you know Avanti Trains' west coast service can take you to over 50 different stations? From the Bangor and Holyhead, to Edinburgh and Glasgow. Find their route information here  
[www.avantiwestcoast.co.uk](http://www.avantiwestcoast.co.uk)

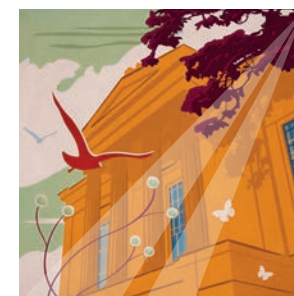
National Rail [www.nationalrail.co.uk](http://www.nationalrail.co.uk)

Safe and happy travels

Download this information guide from our website  
[www.abbeylinecommunityrail.org.uk](http://www.abbeylinecommunityrail.org.uk)

# HOP ON BOARD AND RIDE THE ABBEEY LINE for Amazing Days Out!

[www.abbeylinecommunityrail.org.uk](http://www.abbeylinecommunityrail.org.uk)



# Enjoy an Amazing Day Out...

There's lots going on along the Abbey Line, from parks, walks and cycle paths to shopping and entertainment. Travelling on the Abbey line service is an easy and convenient way to explore from Watford to St Albans, with an end to end travel time of just 16 minutes. Local bus services stop at most of our stations for onward local journeys too.

So have a look at our current list of local events, things to do and places to visit on our website along with a wealth of travel information to help plan an amazing day out.

[www.abbeylinecommunityrail.org.uk](http://www.abbeylinecommunityrail.org.uk)

# Walking the Abbey Line Trail...

To walk the full 9 miles (15km) start at either Watford Junction or St Albans Abbey Station. The trail will take approximately 4 – 5 hours and the train journey is 16 minutes from end to end. To shorten or vary the walk you can join it from Watford North, Garston, Bricket Wood or Park Street stations. The Abbey Line Trail and links to these stations are waymarked in both directions. A downloadable version of the Abbey Trail map is available from our website [www.abbeylinecommunityrail.org.uk](http://www.abbeylinecommunityrail.org.uk).

Information on other Abbey Flyer walks and cycling routes in Hertfordshire are available from [www.hertfordshire.gov.uk](http://www.hertfordshire.gov.uk)



St Albans Cathedral



Abbey Theatre



Pump House Theatre



St Albans Museum & Gallery



Verulamium Park



Cassiobury Miniature Railway



Cassiobury Park



Watford Market



Watford Museum



ST ALBANS ABBEY

PARK STREET

HOW WOOD

BRICKET WOOD

GARSTON

WATFORD NORTH

WATFORD JUNCTION

Why not join our family of volunteers and be involved in our events, projects and looking after our stations. Contact us at [info@abbeylinecommunityrail.org.uk](mailto:info@abbeylinecommunityrail.org.uk)